

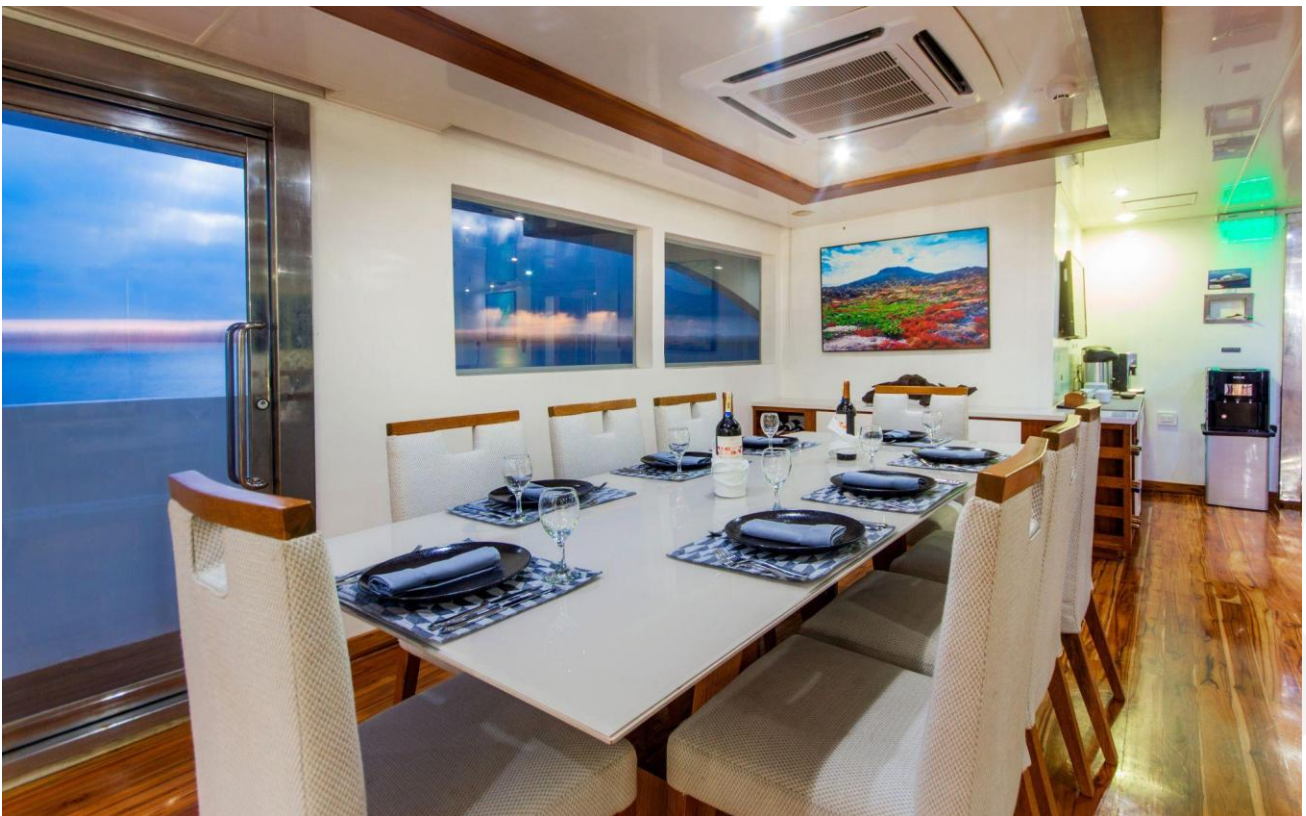
Infinity Yacht

Galapagos Cruise Expedition Itinerary 4A: 4 Days – 3 Nights



The Infinity Yacht is one of the most modern and stylish luxury motor yachts sailing the Galapagos, designed specifically for environmentally friendly cruising. Launched in 2018, this 161-foot vessel combines high performance with unmatched comfort, offering an intimate experience for up to 20 passengers. With state-of-the-art safety and navigation systems, plus a crew of 11 including two Level 3 naturalist guides (the highest classification in the Galapagos), the Infinity ensures a safe, seamless, and enriching journey through Darwin's "living laboratory."

Guests enjoy spacious accommodations with private balconies, elegant furnishings, and all the amenities of marine luxury. The yacht features two expansive double suites and eight twin cabins spread across the main and upper decks, all equipped with private bathrooms, hot showers, air conditioning, safety deposit boxes, and generous storage space. Social areas include a lounge and bar, al-fresco and indoor dining, a Jacuzzi, a sundeck for soaking in island views, a small library, and even kayaks for active exploration. Every corner of the vessel is designed to balance comfort, style, and environmental responsibility.



Every aspect of the Infinity Yacht's design—both technical and experiential—reflects a dedication to comfort, exploration, and sustainability. While the latest navigation and safety systems ensure peace of mind, the yacht's elegant spaces and thoughtful amenities create an atmosphere of relaxation between adventures. Whether you're unwinding with a cocktail on the sundeck, kayaking along volcanic shores, or sharing stories over dinner under the stars, the Infinity offers one of the most exclusive and rewarding ways to experience the Galapagos Islands.

Accommodation



Technical Specifications

- **Year of construction:** 2016
- **Type:** Luxury motor yacht
- **Capacity:** 20 Passengers + 11 crew members (including 2 guides)
- **Guides:** Level 3 (the highest classification of the Galapagos National Park)
- **Length:** 49 Meters / 161 Feet
- **Beam:** 10 Meters / 33 Feet
- **Draft:** 2.4 meters / 8 feet
- **Max speed:** 10 Knots
- **Gross Tonnage:** 420 Tons
- **Main engines:** 2x SCANIA Diesel Engine 550HP @1800RPM 8000H
- **Generators:** 2x John Deere Genset 70kw@1800rpm standby 3ph 60Hz



ITINERARY AT A GLANCE

Day 1 - Tuesday: Arrival at Baltra Airport (Baltra Island) + Transfer to Boat + Black Turtle Cove (Santa Cruz Island)

Day 2 - Wednesday: El Barranco + Darwin Bay (Genovesa Island)

Day 3 - Thursday: Sullivan Bay (Santiago Island) + Rabida Island

Day 4 - Friday: Charles Darwin Research Station + Transfer to Baltra Airport

ITINERARY MAP





DAY BY DAY ITINERARY

Day 1 - Tuesday: Arrival at Baltra Airport (Baltra Island) + Transfer to Boat + Black Turtle Cove (Santa Cruz Island)



Your Galapagos adventure begins with a morning flight from Quito or Guayaquil to Baltra Island — the main gateway to this enchanted archipelago. After paying the national park entrance fee, you'll be welcomed by your guide and escorted to your elegant home for the next few days: the Infinity Yacht. Settle in, enjoy lunch on board, and take in the excitement of setting sail in one of the world's most unique destinations.

In the afternoon, you'll head to Santa Cruz Island and drift into the calm waters of Black Turtle Cove. This mangrove-lined sanctuary is alive with marine life — keep your eyes peeled for sea turtles poking their heads above the surface, golden rays gliding just beneath the water, and perhaps even reef sharks slipping silently below. It's a peaceful, almost secret world where nature unfolds just meters from your boat.

Meals included: Lunch, Dinner

Day 2 - Wednesday: El Barranco + Darwin Bay (Genovesa Island)



Today brings you to Genovesa, nicknamed “Bird Island” for good reason. Your morning hike at El Barranco, along rugged volcanic terrain, leads you to dramatic cliffs teeming with seabird activity. This is one of the best spots to see Red-footed boobies, Nazca boobies, and even elusive owls. Storm petrels dance in the air while fur seals lounge on the rocks, making this walk an unforgettable blend of landscapes and wildlife encounters.

In the afternoon, a wet landing at Darwin Bay reveals a coral sand beach buzzing with activity. Frigatebirds inflate their scarlet throats to impress females, while boobies dive spectacularly into the water in search of fish. As you wander the trail through mangroves and tide pools, the mix of bird colonies and coastal scenery will leave you in awe. This is Genovesa at its finest — raw, wild, and absolutely captivating.

Meals included: Breakfast, Lunch, Dinner

Day 3 - Thursday: Sullivan Bay (Santiago Island) + Rabida Island



Step onto Santiago Island this morning, where the surreal lava fields of Sullivan Bay transport you to another world. These striking black formations, shaped by past eruptions, create a moonscape dotted with hardy lava cacti. Walking across the rippling textures of frozen lava feels like traveling back in time to when the islands were first formed. Afterward, cool off by snorkeling among playful sea lions and colorful reef fish.

Later, sail to Rabida Island and discover its iconic red beach — one of the most striking landscapes in the Galapagos. The iron-rich sand contrasts beautifully with turquoise waters and green vegetation, making it a photographer's dream. Flamingos may be spotted in the saltwater lagoon, while pelicans and sea lions patrol the coast. Snorkel here for a chance to see schools of tropical fish darting through the clear water.

Meals included: Breakfast, Lunch, Dinner

Day 4 - Friday: Charles Darwin Research Station + Transfer to Baltra Airport



Your final morning brings you to the Charles Darwin Research Station in Puerto Ayora, the beating heart of conservation in the Galapagos. Here, you'll meet the famous giant tortoises — some over a century old — and learn about ongoing breeding programs that safeguard these remarkable creatures. The story of “Lonesome George,” once the last of his kind, is especially moving and highlights the fragile balance of this unique ecosystem.

After one last look at the island's lush highlands, it's time to say goodbye. You'll be transferred to Baltra Airport for your return flight to the mainland, carrying with your memories of red beaches, volcanic moonscapes, and unforgettable encounters with the incredible wildlife of the Galapagos.

Meals included: Breakfast



Included in the price

- All meals, as indicated in the itinerary
- All excursions
- Transfers in the islands
- Bilingual National Park guide
- Use of snorkeling equipment/wetsuit

Not included in the price

- Flights between mainland Ecuador and the Galapagos Islands (Quito–Galapagos–Quito)
- Entrance fee to Galapagos National Park (USD 200 per person)
- Galapagos Immigration Control Card (USD 20 per person)
- Alcoholic and bottled drinks
- Tips & gratuities
- Personal expenses
- Travel/medical insurance (highly recommended)